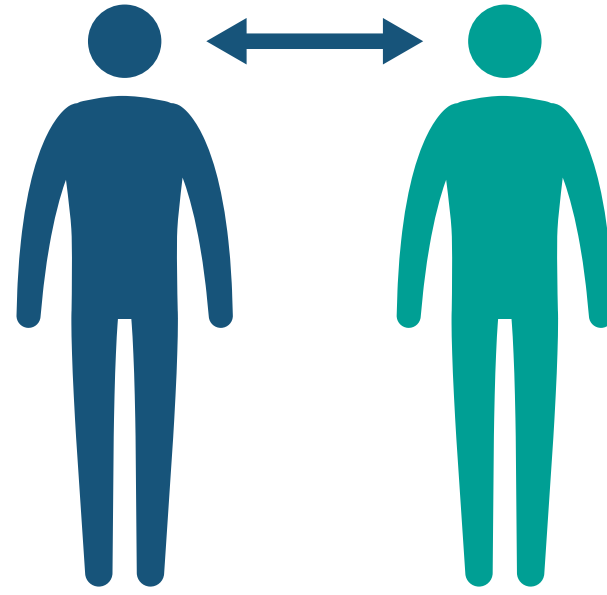


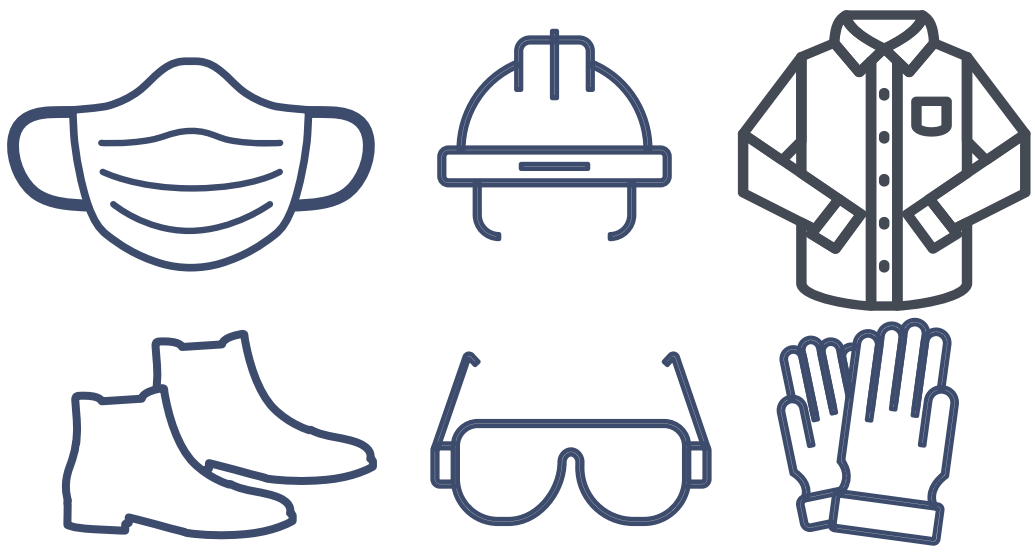
# Life Saving Rules : Covid-19



**1** Do not attend workplace if you have fever and cough, seek medical care early.



**2** Maintain **social distancing of 1.8 Mtr.** At workplaces ensure safe distances while maintaining safe operations as per the specific conditions



**3** **6 PPE are advised** before entering the factory premises Safety Helmet, Goggles, cotton nose mask, full sleeves, hand gloves & Safety shoes



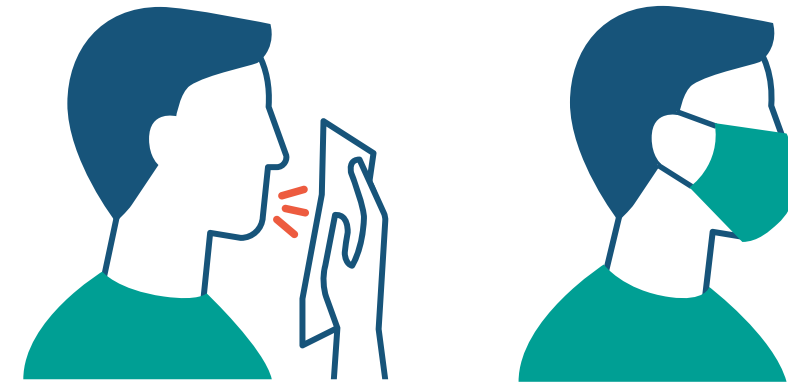
**4**

All shall cooperate to undergo **thermal screening** while entering, exiting and random check at workplace



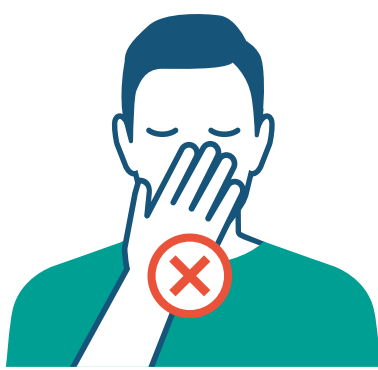
**5**

Regularly and thoroughly **clean your hands with soap and water.** Where soap and water are not available, use an approved sanitizer.



**6**

**Use cloth mask all the time. Practice cough etiquette** - Use tissue paper while you sneeze or cough or cover with sleeve from elbow region



**7**

**Avoid touching** eyes, nose and mouth with unwashed hands.



**8**

**Cloth mask can be reused after washing.** Soiled cloth masks to be disposed in the dedicated container marked as "Bio Medical Waste".



**9**

**Follow the CFI business specific or local government directions** under lockdown & after lifting the lockdown whichever is stringent.

**10**

**Ensure sanitisation** of all frequent touch points once in every

